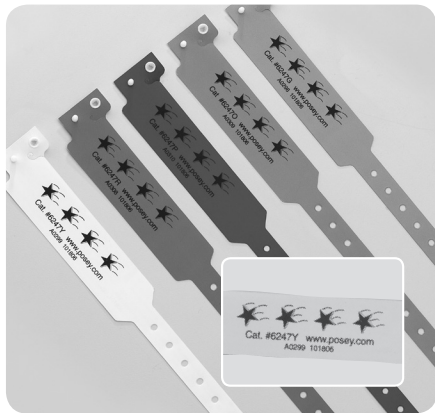


Falls Management Bracelets

Posey Falls Management Bracelets offer a non-intrusive way to clearly identify a high fall risk patient. Strong and durable, yet lightweight for patient comfort. Available in five colors. "Fall Risk" Bracelet available in yellow only.

- REF 6247R** Red
- REF 6247O** Orange
- REF 6247P** Purple
- REF 6247G** Green
- REF 6247Y** Yellow
- REF 6251Y** Yellow
Fall Risk



Application Instructions:

1. Size bracelet around patient's wrist (Fig. 1).
2. Line up desired hole and snap fastener closed (Fig. 2).
3. You should be able to easily insert one finger between the bracelet and the patient's limb (Fig. 3).
4. Trim off any excess wristband material with scissors, leaving smooth, rounded corners.



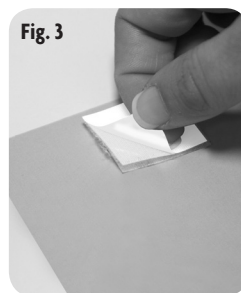
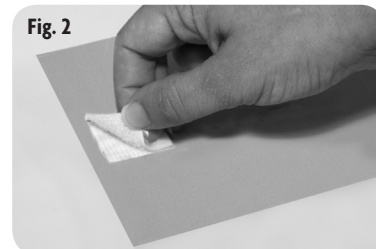
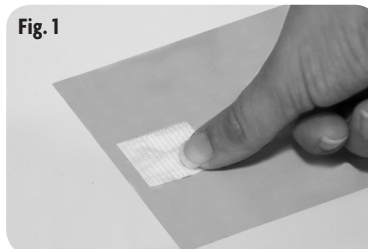
Falling Star Signs

Posey Falling Star Signs are designed for use on the outside of the patient's room door to help staff identify that the individual in the room is at high risk for falling. The sign attaches to the desired location with adhesive hook and loop patches. Available in 5 colors and packaged 12 per bag. Signs measure 4 1/2" x 11" (11 cm x 28 cm).

- REF 6232G** Green
- REF 6232P** Purple
- REF 6232Y** Yellow
- REF 6232O** Orange
- REF 6232R** Red

Application Instructions:

1. Choose a site next to or on the patient's door on the outside hallway.
2. Clean mounting site with an alcohol wipe and let it dry.
3. Attach hook (rough) patch to the Falling Star Sign by peeling off the backing and pressing into place (Fig. 1).
4. Attach the loop (fuzzy) patch to the hook patch by pressing together (Fig. 2).
5. Attach the Falling Star Sign to the mounting site by peeling the backing off the loop patch (Fig. 3) and pressing into place (Fig. 4).



Falling Star Magnets

Designed for use on the outside door jamb of the patient's room, or a bed headboard, to help staff identify individuals at high risk for falling. Available in five colors. Packaged twelve per bag.

Magnets measure 3" x 3" (8 cm x 8 cm)

- REF 6233G** Green
- REF 6233O** Orange
- REF 6233P** Purple
- REF 6233R** Red
- REF 6233Y** Yellow

